

ultra D Ultrasonic Bulk Water Meters

Features

- Superior hydraulic design, no moving parts, zero wear, eliminate maintenance
- Advanced ultrasonic technology for precise and ultra reliable metering
- Extremely wide turndown ratio (R=500)
- Excellent long-term stability and reliability
- Extremely sensitive and accurate in low flow
- Battery powered - above 10 years lifetime
- Body materials - epoxy coated cast iron, stainless steel (304, 316, 316L), suitable for utilities, waterworks, commercial, industrial, agricultural as well as ultrapure water, sea water and other corrosive fluid metering application
- Fully submersible design (IP68)



Technical Specifications

Maximum Working Pressure	1.6MPa
Temperature Class	T30, T50 (Higher temperature customizable)
Accuracy Class	Class 2 (IS 4064:2005, Class 1 customizable)
Battery Powered	above 10 years lifetime (20 years customizable)
Ingress Protection	IP68
Environment Temperature	-20~70°C, ≤100%RH
Pressure Loss	Δp16
Climatic and Mechanical Environment	Class C
Display	9 digit LCD Display + prompts Cumulative flow (m ³ , L, GAL), Instantaneous flow (m ³ /h, L/min, GPM), Flow direction, Low battery alarm, Output mode, Leak detection, etc.
Connections	Flanges according to EN1092-1 (Other standards customizable)
Electromagnetic Environment Class	E1
Flow Profile Sensitivity	U0/D0 m
Date Storage	Store the data in last 7×24h, 365 days and 72 months
Output (optional)	RS485 (ModBus), M-Bus, OCT pulse, 4-20mA ^a
Accessories	Wireless GPRS/GSM, Wireless handheld operator
Related Patents	ZL 2012 2 0007226.2, ZL 2015 2 0007267.3 and ZL 2015 2 0007268.8

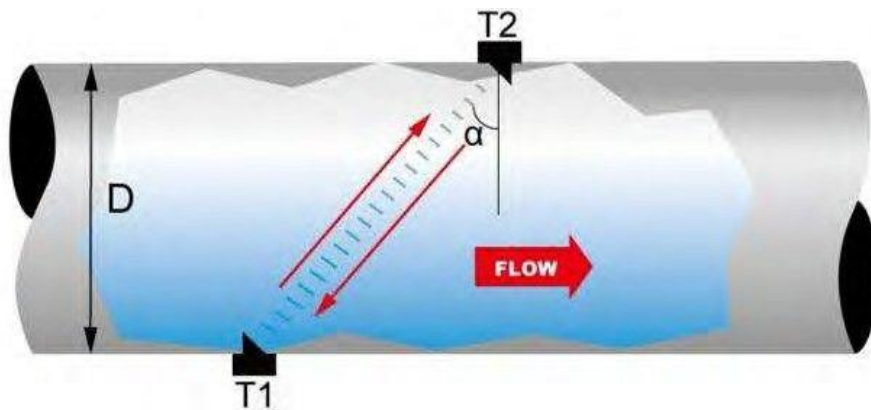
Concise Pipe Design

- Dual Beam Ultrasonic Technology
- No moving parts
- Superior hydraulic design

Ultrasonic transit-time measuring Principle for precise metering

Dual path ultrasonic technology

Precise and reliable metering



$$V = K * \Delta t, \quad Q = S * V_m$$

Q: water flow rate

V: water velocity

S: cross section area of the pipe

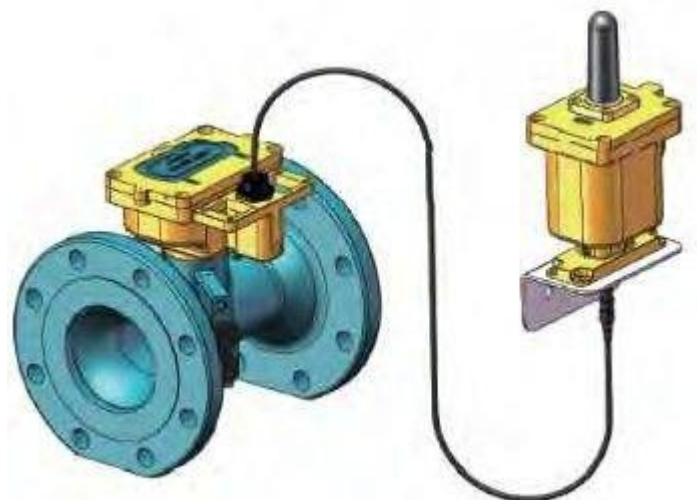
K: constant

$\Delta t = t_2 - t_1$

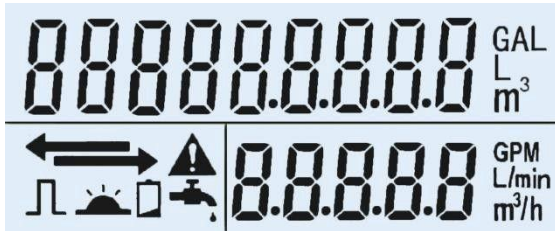
Standards



MID
APPROVED



Digital Display



- Volume
- Flowrate
- Leak detection
- IR Communication
- Flow direction
- Low battery alert
- Pulse output
- Alarm

Measuring Range*

Meter	(mm)	50	65	80	100	125	150	200	250	300
Size	(inch)	2	2 1/2	3	4	5	6	8	10	12
Starting Flow (m³/h)		0.01	0.013	0.02	0.031	0.048	0.069	0.122	0.191	0.275
Q1 (m³/h) (± 5%)		0.08	0.125	0.125	0.2	0.2	0.5	0.8	2	2.5
Q2 (m³/h) (± 2%)		0.125	0.2	0.2	0.32	0.32	0.8	1.28	3.2	4
Q3 (m³/h) (± 2%)		40	63	63	100	100	250	400	1000	1250
Q4 (m³/h) (± 2%)		50	80	80	125	125	313	500	1250	1563
R - Q3/Q1		500								

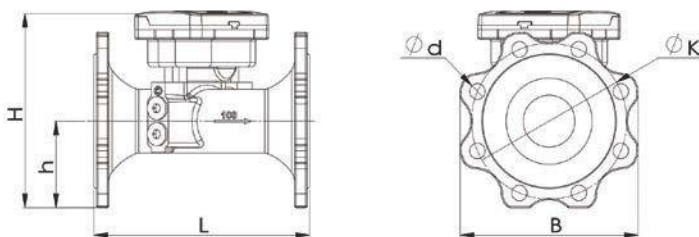
Dimensions*

Meter	(mm)	50	65	80	100	125	150	200	250	300
Size	(inch)	2	2 1/2	3	4	5	6	8	10	12
L- Length (mm)		200	200	225	250	250	300	350	450	500
B - Width (mm)		125	142	186	204	240	285	340	395	445
H - Height (mm)		180	185	213	226	231	280	327	374.5	414.5
h - Height (mm)		65	68	93	102	112	142.5	170	197.5	222.5
d x n		18x4	18x4	18x4	18x4	18x4	22x8	22x8	22x12	22x12
K (mm)		125	145	160	180	210	240	295	355	410
Pressure (MPa)		1.6	1.6	1.6	1.6	1.6	1.6	1	1	1
Weight (kg)	SS	9	11	13	16	21	29	46	60	74
	Cast Iron	6	6.5	13	16	21	30	45	55	68

Remarks d: diameter of bolt holes, n: numbers of bolt holes, K: central circle diameter of bolt holes

*Other requirements customizable

Flanged



Dynaflox Shanghai Co., Ltd.

Address: 555/100 B-Avenue, Sukhapiban 5

Rd. Au-Ngen, Saimai Bangkok Thailand

Tel: 662-1925930-5

Fax: 662-1925932

E-mail: sales@flowmeters.co.th

Website: www.flowmeters.co.th